

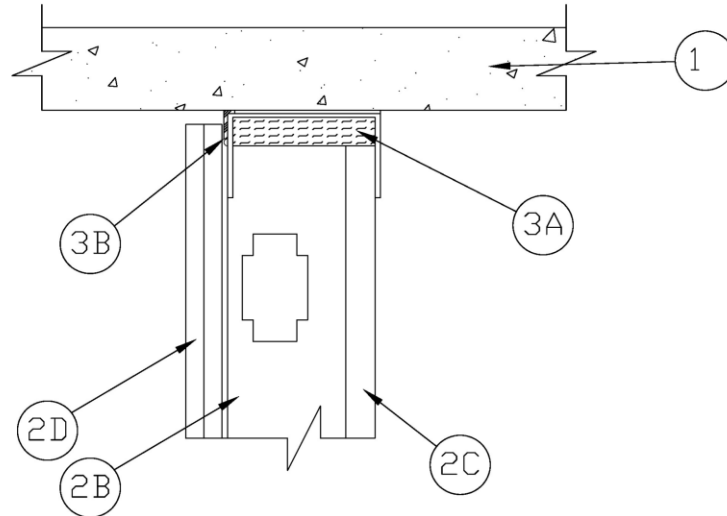
SYSTEM NO. HW-D-0585

CAN/ULC S115
Assembly Ratings - 2 Hr

Nominal Joint Width - See Chart, Section 3
Class II or III Movement Capabilities - See Chart, Section 3

L Rating at Ambient - 3.25 L/s/m or
less than 1.55 L/s/m (See Item 3B)

L Rating at 204°C - 2.06 L/s/m
or less than 1.55 L/s/m (See Item 3B)



1. **Floor Assembly** -- Concrete -- Min 4-1/2 in. (114 mm) thick reinforced concrete.
2. **Shaft Wall Assembly** - The 2 hr fire rated gypsum board/stud wall assembly shall be constructed of the materials and in the manner described in the individual U400 or V400 Series Wall and Partition Design in the UI Fire Resistance Directory and shall include the following construction features:
 - A. **Steel Floor and Ceiling Runners** - Floor runner U-shaped, sized to accommodate steel studs (Item 2B), fabricated from min 24 ga galv. steel. Runners attached to floor with steel fasteners located not greater than 2 in. from ends and not greater than 24 in. OC. Ceiling runner fabricated from min 20 ga galv steel with flange height of legs of ceiling runners min 1 in. (25 mm) greater than max extended joint width. **When Item 3B or 3B1 is used, the ceiling runners are provided with a fill, void or cavity material.**
 - A1. **Light Gauge Framing* -- Slotted Ceiling Track** -- (Not Shown) - As an alternate to the Item 2A, a ceiling track consisting of galv stell channel with slotted flanges may be used when Item 3B or 3B.1 is utilized. Slotted ceiling track sized to accommodate steel "C-T", "I" or "C-H" studs (Item 2C). Attached to steel deck with fasteners or welds spaced max 24 in. (610 mm) OC.

BRADY CONSTRUCTION INNOVATIONS INC, DBA SLIPTRACK SYSTEMS - SLP-TRK
CALIFORNIA EXPANDED METAL PRODUCTS CO - CST
 - B. **Studs** -- "C-T", "I", or "C-H" shaped steel studs to be min 4 in. (102 mm) wide and formed of min 24 ga galv steel. Studs cut 2 to 2-1/4 in. (51 to 57 mm) less in length than assembly height with bottom nesting in and secured to floor runner. Studs spaced max 24 in. (610 mm) OC.
 - C. **Gypsum Board*** -- 1 in. (25 mm) thick by max 24 in. (610 mm) wide gypsum board liner panels. Panels cut 1-1/4 to 1-1/2 in. (32 to 38 mm) less in length than floor to ceiling height. Vertical edges inserted into "T" shaped section of "C-T" studs, into holding tabs of "I" studs or into "H"-shaped section of "C-H" studs.
 - D. **Gypsum Board*** -- Gypsum board 1/2 or 5/8 in. (13 or 16 mm) thick, applied on finished side of wall as specified in the individual Wall and Partition Design. The boards cut a max 1-1/4 to 2 in. (32 to 51 mm) less in length than the floor to ceiling height. The screws attaching the gypsum board layer(s) to the "C-T", "I", or "C-H" studs shall be located between 4 and 5 in. (102 - 127 mm) down from ceiling surface.

TRIM-TEX
DRYWALL SOLUTIONS

Reproduced Courtesy of Underwriters Laboratories, Inc.
Created or Revised: December 5, 2022

Trim-Tex | P: (800) 874-2333 | F: (800) 644-0216 | www.trim-tex.com



Page 1 of 2

HW-D-0585

SYSTEM NO. HW-D-0585

CAN/ULC S115
Assembly Ratings - 2 Hr

Nominal Joint Width - See Chart, Section 3
Class II or III Movement Capabilities - See Chart, Section 3

L Rating at Ambient - 3.25 L/s/m or
less than 1.55 L/s/m (See Item 3B)

L Rating at 204°C - 2.06 L/s/m or
less than 1.55 L/s/m (See Item 3B)

- 3. Joint System** - Max separation between bottom of floor and top of gypsum board (at the time of installation) is 7/8 in. (22 mm) or 1-1/16 in. (27 mm) When Item 3B is used the maximum separation between the bottom of the floor and the top of the gypsum board (at the time of installation) is 1/2 in. (13 mm). When item 3C is used, max separation between bottom of floor and top of gypsum board (at the time of installation) is 1 in. (25 mm) or 2 in. (51 mm). When Item 3B2, 3B3 or 3B4 is used, max separation between bottom of floor and top of gypsum board (at the time of installation) is 1/2, 1 or 1-1/2 in. (13, 25 or 38 mm) respectively. The joint system is designed to accommodate compression and/or extension from its installed width as specified in Table below.

- A. Forming Material*** -- Min 2 in. (51 mm) thick min 4 pcf (64 kg/m³) mineral wool batt insulation cut to friction fit 33% compression in width and installed into ceiling runner between leg of track and gypsum liner board.

Item	Product	Max Gap	Movement
3B	DDA (CEMCO)	7/8 in. (22 mm)	94% Comp; 100% Ext
3B1	DDA-1 (CEMCO)	1/2 in. (13 mm)	94% Comp; 100% Ext
3B2	Fire Gasket 0.5 (CEMCO, MARINO/WARE, TRIM-TEX)	1/4 in. (6 mm)	100% Comp; 100% Ext
3B2	Fire Gasket 0.5 (CEMCO, MARINO/WARE, TRIM-TEX)	1/2 in. (13 mm)	100% Comp; 0% Ext
3B3	Fire Gasket 1 (CEMCO, MARINO/WARE, TRIM-TEX)	1/2 in. (13 mm)	100% Comp; 100% Ext
3B3	Fire Gasket 1 (CEMCO, MARINO/WARE, TRIM-TEX)	1 in. (25 mm)	100% Comp; 0% Ext
3B4	Fire Gasket 1.5 (CEMCO, MARINO/WARE, TRIM-TEX)	3/4 in. (19 mm)	100% Comp; 100% Ext
3B4	Fire Gasket 1.5 (CEMCO, MARINO/WARE, TRIM-TEX)	1-1/2 in. (38 mm)	100% Comp; 0% Ext
3C	FireRip-2 (CEMCO)	1 in. (25 mm)	94% Comp; 100% Ext
3C	FireRip-2 (CEMCO)	2 in. (51 mm)	94% Comp; 0% Ext

- D. Fill, Void or Cavity Material*** -- (Not Shown) - Butt joints in the FireRip to be sealed with a min 1/4 in. (6 mm) bead of sealant. In addition, sealant shall be used to seal any voids and dimples within the fluted steel deck on both sides of wall to maintain L Ratings.

UNITED STATES GYPSUM CO -- TYPE AS

*** Indicates such products shall bear the UL or cUL Certification Mark for jurisdictions employing the UL or cUL Certification (such as Canada), respectively.**

The appearance of a company's name or product in this database does not in itself assure that products so identified have been manufactured under UL's Follow-Up Service. Only those products bearing the UL Mark should be considered to be Certified and covered under UL's Follow-Up Service. Always look for the Mark on the product.

UL permits the reproduction on the material contained in the Online Certification Directory subject to the following conditions: 1. The Guide Information, Assemblies, Constructions, Designs, Systems, and/or Certifications (files) must be presented in their entirety and in a non-misleading manner, without any manipulation of the data (or drawings). 2. The statement "Reprinted from Product IQ with permission from UL Solutions" must appear adjacent to the extracted material. In addition, the reprinted material must include a copyright notice in the following format: "© 2023 UL LLC"

TRIM-TEX
DRYWALL SOLUTIONS

Reproduced Courtesy of Underwriters Laboratories, Inc.
Created or Revised: December 5, 2022

Trim-Tex | P: (800) 874-2333 | F: (800) 644-0216 | www.trim-tex.com



Page 2 of 2

HW-D-0585